



### The Road to Nuclear Deployment

Hilary Lane  
Senior Director, Strategic Partnerships  
Real Estate Roundtable  
May 29, 2025





---

---

---

---

---

---

---

---

### Our Time Together...



 Current Fleet

 Nuclear Plant Re-Starts

 Advanced Reactors

 Partnerships with "Big Tech"

 Advocacy and Opportunities

©2022 Nuclear Energy Institute 2

---

---

---



---

---

---

---

---



### THE NUCLEAR ENERGY INSTITUTE

is the **policy organization** of the nuclear technologies industry, based in Washington, D.C.

On behalf of its members, NEI is the **unified voice** of the nuclear energy industry on various **policy, technical, and regulatory issues**.

- **350+ MEMBERS IN 17+ COUNTRIES**

---

---

---

---

---

---

---

---

**350+ Members**  
*NEI brings all facets of the nuclear opportunity together.*

  
Nuclear Utilities

  
EPCs & Suppliers

  
Fuel Cycle

  
Advanced Reactors

  
Customers

  
Investment & Financial Firms

  
Decommissioning

  
National Labs

  
Universities

  
Law Firms

  
Consultants

  
Labor Unions

  
NGOs & Think Tanks

NEI's full member roster can be found at: [www.nei.org/about-nei](http://www.nei.org/about-nei)

---

---

---

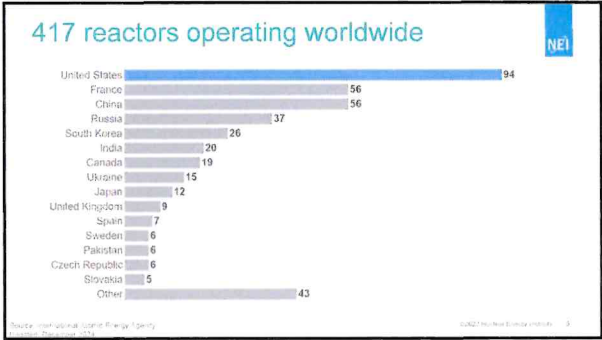
---

---

---

---

---



---

---

---

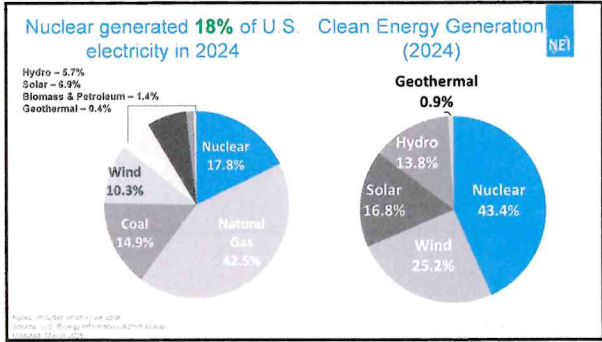
---

---

---

---

---



---

---

---

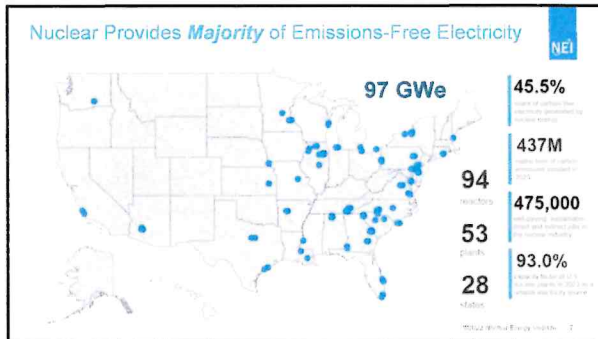
---

---

---

---

---




---

---

---

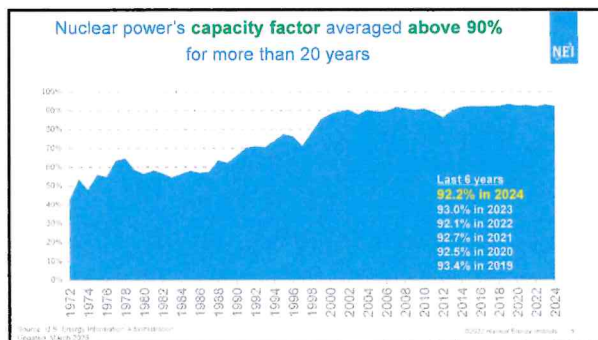
---

---

---

---

---




---

---

---

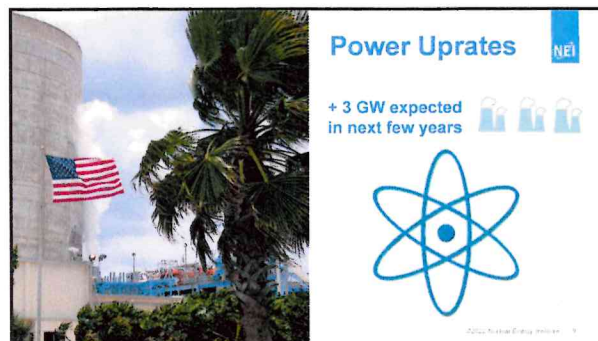
---

---

---

---

---




---

---

---

---

---

---

---

---



---

---

---

---

---

---

---

### Massive Drivers of Electricity Demand & Growth

- > The rise of artificial intelligence is supercharging data center growth;
- > Increased industrial load, particularly from re-onshoring of manufacturing;
- > Electrification of transportation and buildings is building momentum;
- > Oil and gas production is driving power demand in the Permian and Bakken fields; and
- > Hydrogen fuel plants could emerge as a major factor in future electric load

### Nuclear Power Uniquely Suited for this Moment

- ✓ Clean
- ✓ Firm (Baseload)
- ✓ Energy/National Security
- ✓ Versatile
- ✓ Proven
- ✓ Scalable
- ✓ Jobs creating

---

---

---

---

---

---

---

### Historic Plant Re-Starts

- Palisades (Covert, Michigan)
- Crane Clean Energy Center (Former TMI - Unit 1; Middletown, PA)
- Duane Arnold (Palo, Iowa)
  - Nearly 3 GW of added capacity
  - Previously shutdown solely due to poor economic conditions
  - Anticipated Re-Starts: ~2026 - 2028

---

---

---

---

---

---

---



---

---

---

---

---

---

---

---



---

---

---

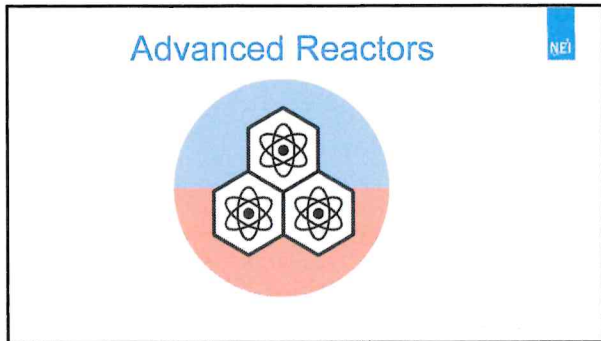
---

---

---

---

---



---

---

---

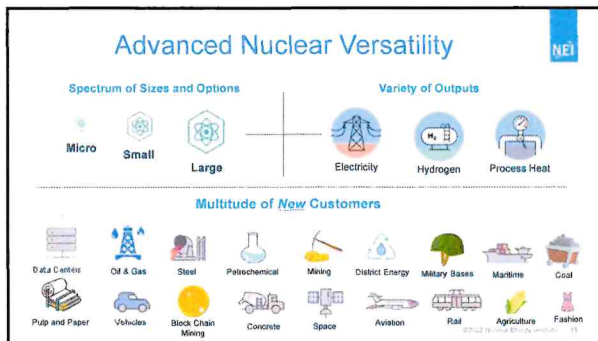
---

---

---

---

---




---

---

---

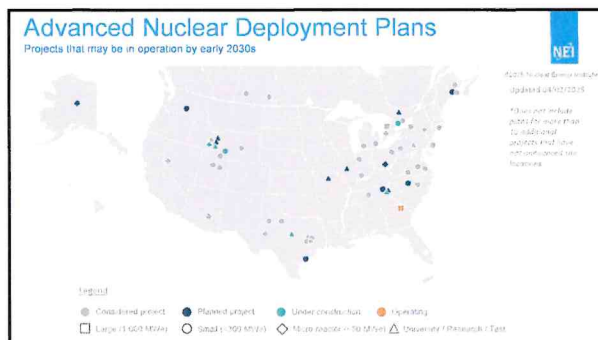
---

---

---

---

---




---

---

---

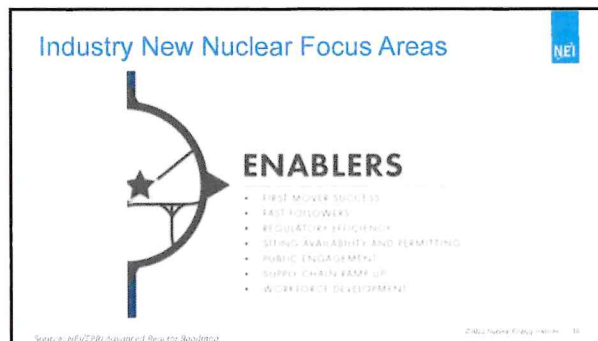
---

---

---

---

---




---

---

---

---

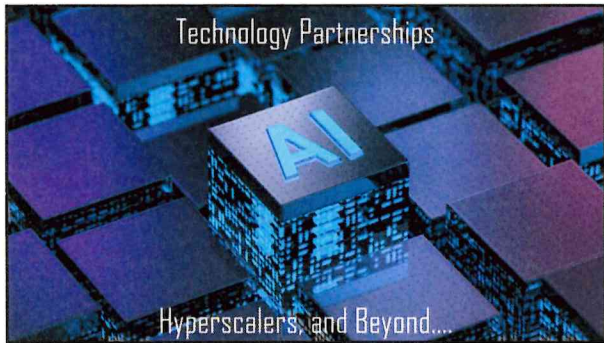
---

---

---

---





---

---

---

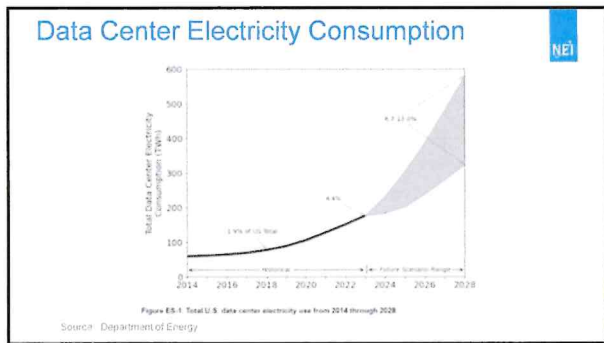
---

---

---

---

---



---

---

---

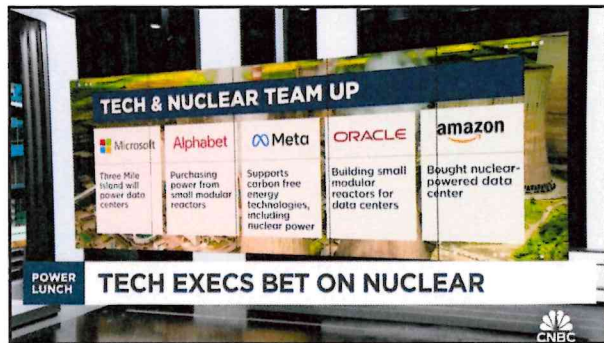
---

---

---

---

---



---

---

---

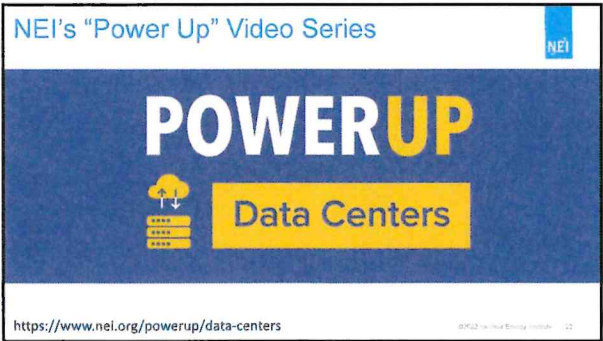
---

---

---

---

---



---

---

---

---

---

---

---

---



---

---

---

---

---

---

---

---



---

---

---

---

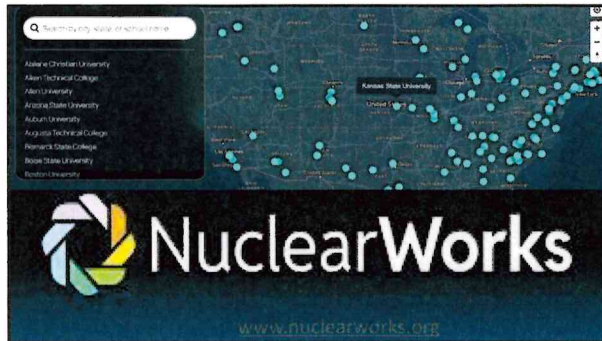
---

---

---

---





---

---

---

---

---

---

---

---



---

---

---

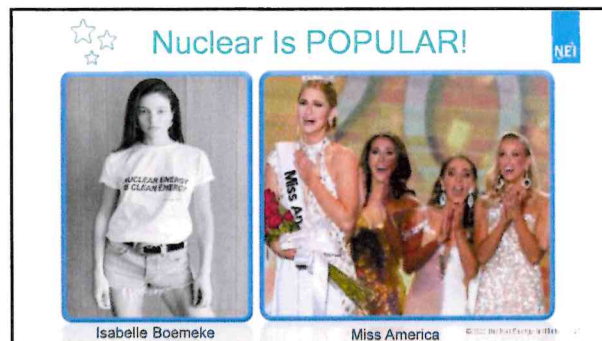
---

---

---

---

---



---

---

---

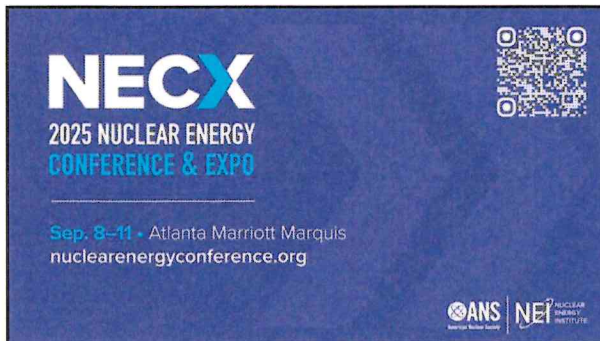
---

---

---

---

---



---

---

---

---

---

---

---



---

---

---

---

---

---

---